

OUVERTURE

Erstveröffentlichung

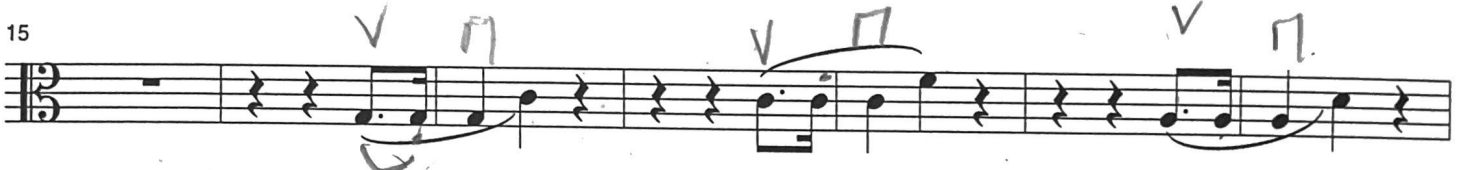
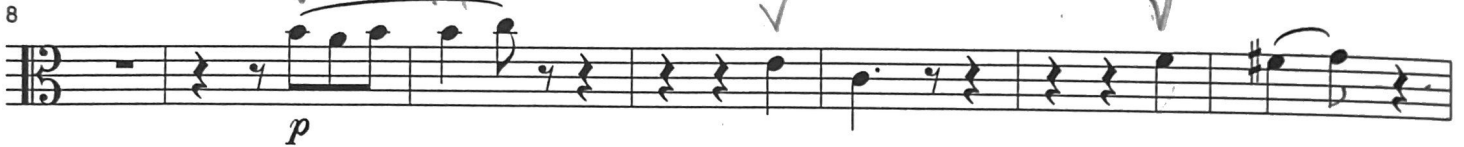
Fanny Hensel-Mendelssohn

(1805-1847)

Viola

Herausgegeben von Elke Mascha Blankenburg

1 Andante



60

mf

63

p *cresc.*

66 **A**

f

70

74

5 *sul pont.* *pp*

84 **B**

5 *p*

97

4

107

19

112

112

cresc. *f* *ff*

117

117

122

122

127

127

132

132

138

138

ppp

sf

144

144

sfp

151

151

4

f

160

160

168

168

pp

p

D

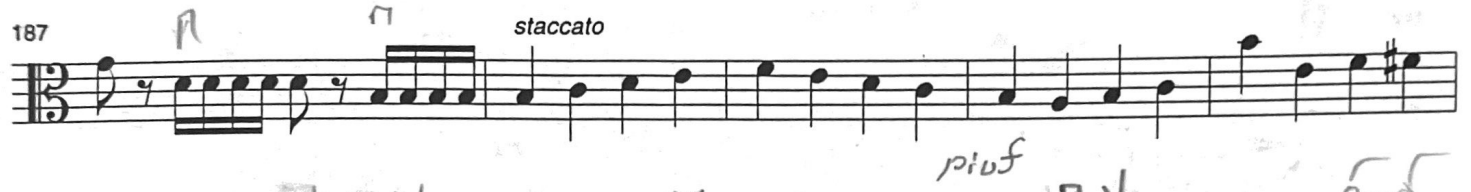
174

174

p

cresc.

181 
Musical staff with notes and rests. Handwritten markings include accents and dynamic markings *f* with hairpins.

187 
Musical staff with notes. Handwritten markings include accents, the word *staccato*, and the dynamic *piu f*.

192 
Musical staff with notes and rests. Handwritten markings include accents and a wavy line.

196 
Musical staff with notes. Handwritten markings include accents, dynamics *ff*, *p*, and *(p)*, and the word *Do*.

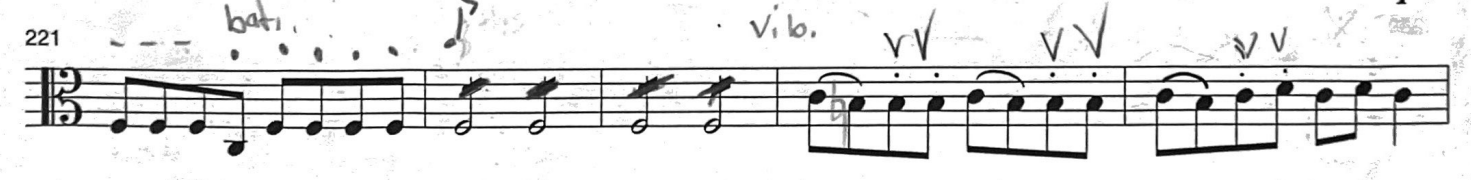
200 
Musical staff with notes. Handwritten marking includes dynamic *p*.

203 
Musical staff with notes. Handwritten markings include a hairpin, *poco cresc.*, *fp*, and *(mid.)*.

206 
Musical staff with notes. Handwritten markings include a flat sign, dynamic *p*, and a note head marked with *E*.

209 
Musical staff with notes. Handwritten markings include a fermata, *cresc.*, and dynamic *ff*.

213 
Musical staff with notes. Handwritten markings include a triangle and dynamic *p*.

221 
Musical staff with notes. Handwritten markings include *bati.*, *vib.*, and accents.

226 
Musical staff with notes. Handwritten markings include *sub. pont.*, *F*, and dynamic *p*.

231 *9* *p* *mf*

245 *p* *pp*

253 *p* *(p)*

260 *G* *p* *poco*

264 *poco* *cresc.* *poco cresc.*

268 *poco* *cresc.*

272

276 *f* *staccato* *ff*

283 *Piu presto e sempre accelerando*

289

295 *mf*

300 ² ⁴

304

310

314

318

323

Leihmaterial
FURORE-Verlag Kassel